





COME ON!



COME ON!



COME ON!



COME BACK!



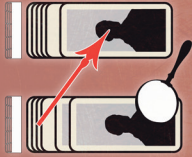
COME BACK !

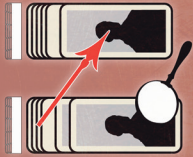


COME BACK !

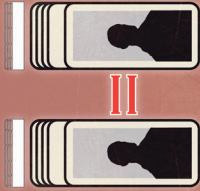


YOUR TURN!





SAME LINES!

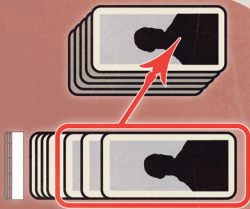


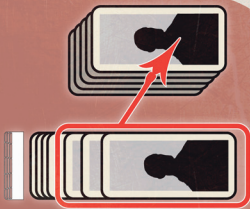
SAME LINES!



II









PLAN A!



PLAN B!



COLLAPSIBLE BOAT



MYSTERY PASSENGER



MYSTERY PASSENGER





EDWARD JOHN SMITH

CAPTAIN





WILLIAM MURDOCH

1ST OFFICER





CHARLES LIGHTOLLER
2ND OFFICER





HERBERT JOHN PITMAN

3RD OFFICER





JOSEPH BOXHALL

4TH OFFICER





HAROLD LOWE

5TH OFFICER





FREDERICK FLEET

LOOKOUT



1  /3



REGINALD LEE

LOOKOUT





ANDREW LATIMER

CHIEF STEWARD





JACK PHILLIPS
WIRELESS OPERATOR





2

2



3



3



4

4



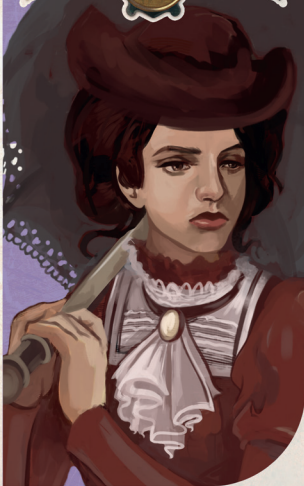
5

5



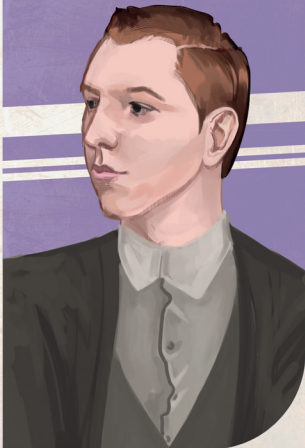
6

6



7

7



8

8



9

9



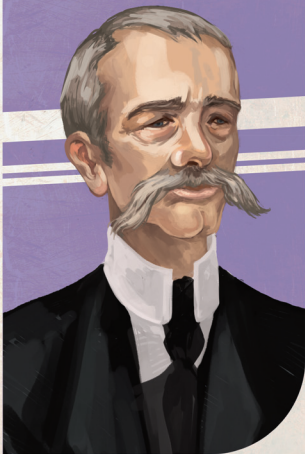
10

10



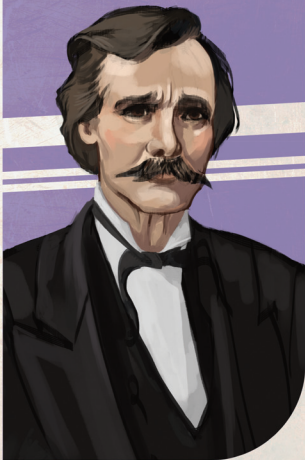
11

11

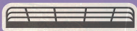


12

12



13



13











5



5





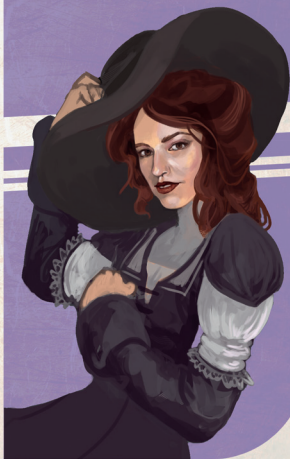
7 ⚓ 7







10 ⚓ 10









1

1



2

2



3

3



4

4



5

5



6

6



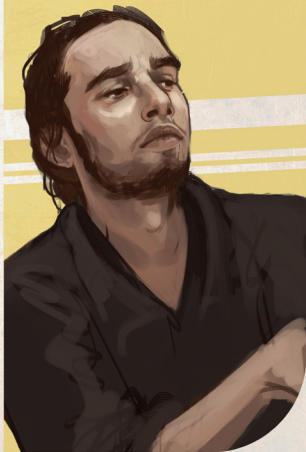
7

7



8

8



9

9



10

10



11

11



12

12



13

13



14

14



15

15

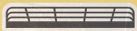


16

16



17



17





2



2



3



3



4



4



5



5



6



6









10



10



11 & 11



12



12



13



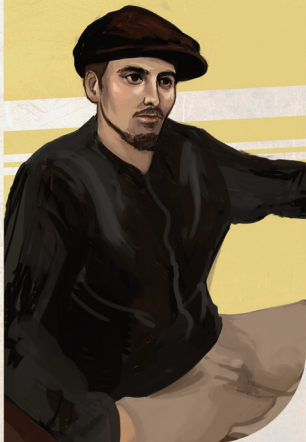
13



14



14



15



15



16



16



17    17

